



Reference List of Produced Aux. Blowers



Item	Type of ship's engine	Blower type	Parameters of blower for = 1.2 kg/m ³	Electric motor		
				Type	Power kW	Speed r.p.m.
1	8L35MC	DTM-35-1	2,70 m ³ /s - 4200 Pa 4,50 m ³ /s - 2500 Pa	mSSKg180M-2	20	2930
2	6L35MC	DTM-35-2	2,00 m ³ /s - 4400 Pa 3,50 m ³ /s - 2500 Pa	mSSKg160M-2	16,6	2930
3	7L45GBE	WPM-40/70*	1,10 m ³ /s - 4000 Pa 2,20 m ³ /s - 2000 Pa	mSSKg160M-2B	13,5	2920
4	10L45GBE	DTM-40-1		mSSKg160L-2	16,6	2930
5	12L45GBE	DTM-40-2	1,50 m ³ /s - 3700 Pa 3,40 m ³ /s - 2000 Pa	mSSKg160L-2	16,6	2930
6	S60MC	DTM-45-3	2,50 m ³ /s - 5600 Pa 4,80 m ³ /s - 4500 Pa	m2SKg250M-2	60	3570
7	6S60MC	DTM-45-4	2,49 m ³ /s - 5600 Pa 4,80 m ³ /s - 3200 Pa	m2SKg250M-2	60	3570
8	L70MC	DTM-45-7	3,20 m ³ /s - 5800 Pa 6,15 m ³ /s - 3200 Pa	m2SKg250M-2	60	3570
9	4L50MC	DM-40	1,20 m ³ /s - 4300 Pa 2,10 m ³ /s - 3700 Pa	mSSKg160L-2	16,6	2930
10	6L50MC	DM-40-3	1,50 m ³ /s - 5600 Pa 3,00 m ³ /s - 3000 Pa	mSSKg180L-2	22,4	3510
11	8L50MC	DM-40-4	2,00 m ³ /s - 4500 Pa 3,30 m ³ /s - 3400 Pa 2,20 m ³ /s - 6600 Pa 4,30 m ³ /s - 4200 Pa	m2SKg200L-2B	34 38	3510
12	6RTA58T	DM-40-6	1,50 m ³ /s - 4500 Pa 4,00 m ³ /s - 2100 Pa	mSSKg180L-2	22,4	3510
13	6RTA68T-B	DM-40-66	3,70 m ³ /s - 5900 Pa	m2SKg200L-2B	38	3575
14	4S50MC	DM-45-1	2,03 m ³ /s - 5600 Pa 3,91 m ³ /s - 3200 Pa	m2SKg200L-2A	28	2970
15	7S50MC	DM-45-5	2,32 m ³ /s - 6000 Pa 4,47 m ³ /s - 4400 Pa	m2SKg200L-2B	38	3575
16	8S50MC	DM-45-6	2,50 m ³ /s - 6500 Pa 4,50 m ³ /s - 5200 Pa	m2SKg225M-2A	50	3570
17	6RT76	DM-50-2		m2SKg200L-2B	34	2975
18	6RT76	DM-50-4	2,50 m ³ /s - 5500 Pa 5,00 m ³ /s - 2800 Pa	m2SKg200L-2B	38	3575
19	7S70MC	DM-51-7	4,42 m ³ /s - 5600 Pa 8,51 m ³ /s - 3200 Pa	m2SKg280M-2	96	3575
20	7-9RT58	WPM-40-1	2,50 m ³ /s - 4800 Pa 4,50 m ³ /s - 3600 Pa	m2SKg200L-2A	28	2970
21	RTA52U	WPM-40-5	1,50 m ³ /s - 4600 Pa 2,55 m ³ /s - 4000 Pa	mSSKg180M-2	22,4	3510
22	6,7RT62	WPM-50-2	2,00 m ³ /s - 4200 Pa 3,90 m ³ /s - 3700 Pa	m2SKg200L-2A	28	2970
23	4,5RT62	WPM-50-3	1,50 m ³ /s - 4100 Pa 2,55 m ³ /s - 3700 Pa	mSSKg180M-2	20	2930
24	8RT62	WPM-50-4	2,55 m ³ /s - 6000 Pa 4,80 m ³ /s - 3700 Pa	m2SKg200L-2B	38	3575
25	6,7RT62	WPM-50-5	2,55 m ³ /s - 5800 Pa 3,90 m ³ /s - 4500 Pa	m2SKg200L-2A	31	3570
26	4,5RT62	WPM-50-6	1,50 m ³ /s - 5000 Pa 2,55 m ³ /s - 3700 Pa	mSSKg180L-2	22,4	3510
27	5S46MC-C	Z2DM-40-5	1,35 m ³ /s - 5600 Pa 2,70 m ³ /s - 3200 Pa	m2SKg200L-2A	28	2970

verte!

N Y B O R G A S

N-6239 SYKKYLVEN

TEL: +47 70 25 4080. FAX +47 70 25 29 08

www.nyborgfan.com



H. CEGIELSKI - POZNAŃ ENGINEERING WORKS

ESTABLISHED 1846

60-965 Poznań
ul. 28 Czerwca 1956 r. 223/229
tel: (48 61) 333 954, 311 925
tlx: 413451 hcp pl fax: 331 441, 312 769

H.CEGIELSKI started its operation in 1846 as a company selling iron products. Till 1939 H.CEGIELSKI-POZNAŃ (HCP) dealt with the repairs and production of farm equipment, production of steam locomotives, railway cars, tramway cars, food-processing equipment, cast iron, machine tools, anti-tank and anti-aircraft guns. In 1948 the company was nationalized and renamed the Metal Industry Works **H.CEGIELSKI-POZNAŃ**. Since then its range of products has changed remarkably and now includes diesel engines (65 % of HCP's output), fuel equipment for diesel engines, marine propulsion automation systems, passenger rail cars, machine tools (also NC), compressors and centrifugal blowers. Constant modernization of the production equipment has accompanied these changes.

The co-operation between HCP and Polish shipyards started in 1957.

H.CEGIELSKI offers:

- diesel engines (450 - 30,000 kW)
- generating sets (500 - 4,000 kVA)
- complete ship propulsion plants
- fuel equipment for diesel engines
- marine propulsion automation systems
- starting air compressors (47 - 720 cu m/h)
- centrifugal blowers (2,500 - 50,000 cu m/h)
- machine tools for ship workshops
- diesel after-sales service



N Y B O R G A S

N-6239 SYKKYLVEN

TEL: +47 70 25 4080. FAX +47 70 25 29 08

www.nyborgfan.com



HCP offers the following types of diesel engines:

1. two-stroke (mostly for main propulsion) made under licences from
 - a) New Sulzer Diesel Ltd:
RTA 84C, RTA 76, RTA 72U, RTA 62U, RTA 62, RTA 58 and RTA 52U.
 - b) MAN B&W Diesel A/S:
S70MC, L70MC, S60MC, L60MC, S50MC, L50MC, S35MC and L35MC.
2. four-stroke (for main and auxiliary propulsion) made under the New Sulzer Diesel Ltd licence: S20, AT25, A25 and A20.

Technical and technological standards of diesel engines made by HCP are guaranteed by licence agreements. **H.CEGIELSKI** is a licensee of two world leaders in diesel engines manufacturing, NEW SULZER DIESEL Ltd and MAN B&W Diesel

A/S. In early 1995 **H.CEGIELSKI** expects to receive an ISO 9001 certificate. HCP has been authorised to coordinate the activities of the Standards Committee for IC Engines. The Committee has been set up by the Polish Standards Committee in co-operation with the ISO and CEN.

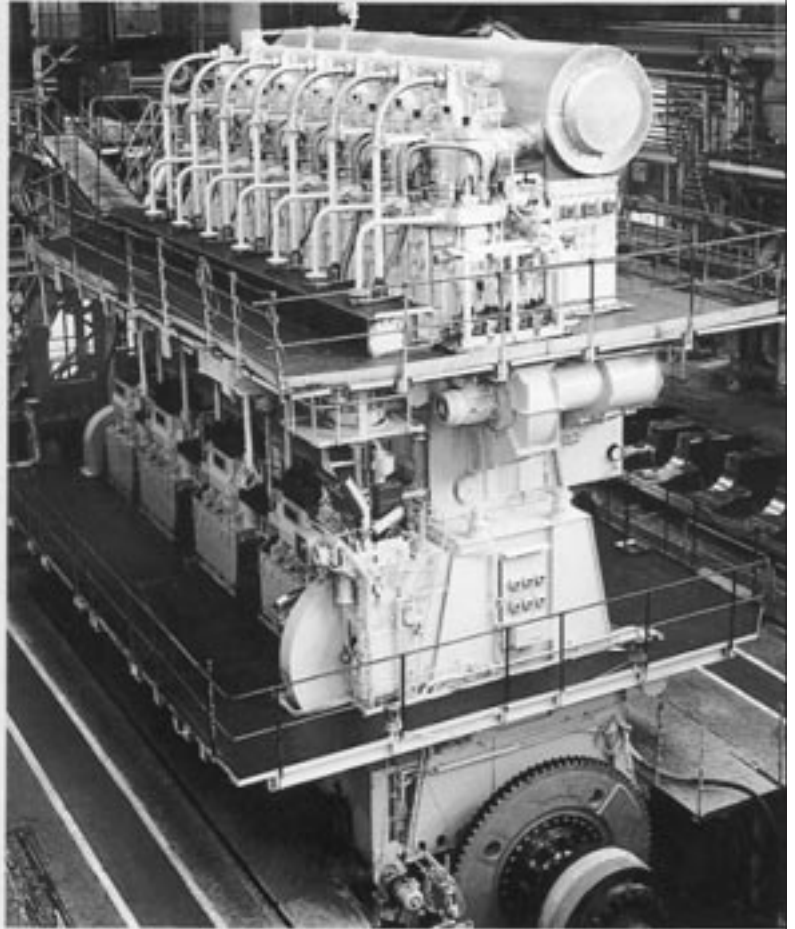
At present **H. CEGIELSKI** has a number of own original innovations. 22 of them are registered by the Patent Office of the Republic of Poland. A constant care for HCP-made product quality and close contacts with licensors have resulted in setting up the Development and Research Centre at HCP. Currently the centre tests torsional vibration of diesel engines and develops methods of eliminating the vibration.

In 1993 the 1,000th low-speed two-stroke diesel engine **H.CEGIELSKI/Sulzer** was made. Polish shipyards are major domestic customers for HCP:

Stocznia Szczecińska S.A., Stocznia Gdańska S.A. and Stocznia Gdynia S.A.. The co-operation between them goes beyond commercial contacts. The HCP designing departments co-operate with similar offices of the shipyards and do their best to successfully meet customers' requests and challenges of technical progress.

H.CEGIELSKI-POZNAŃ is one of major marine diesel engine builders in Europe. More than 7,000 engines made by HCP have been delivered and installed in ships of 37 countries worldwide.

Preparations are underway at **H.CEGIELSKI**, supported by Częstochowa Technical University, to start gas diesel engine production.



Managing Director - tel: (48 61) 332 477, fax: 330 978
Technical/Commercial Director - tel: (48 61) 333 871, fax: 330-978
Marketing Director - tel. (48 61) 333 954, fax: 331 441
Marketing Department - tel: (48 61) 311 925, fax: 312 769
Two-Stroke Diesel Engines Factory Director - tel: (48 61) 311 450, fax: 312 888
Four-Stroke Diesel Engines Factory Director - tel: (48 61) 312 072, fax: 312 810

N Y B O R G A S

N-6239 SYKKYLVEN

TEL: +47 70 25 4080. FAX +47 70 25 29 08

www.nyborgfan.com