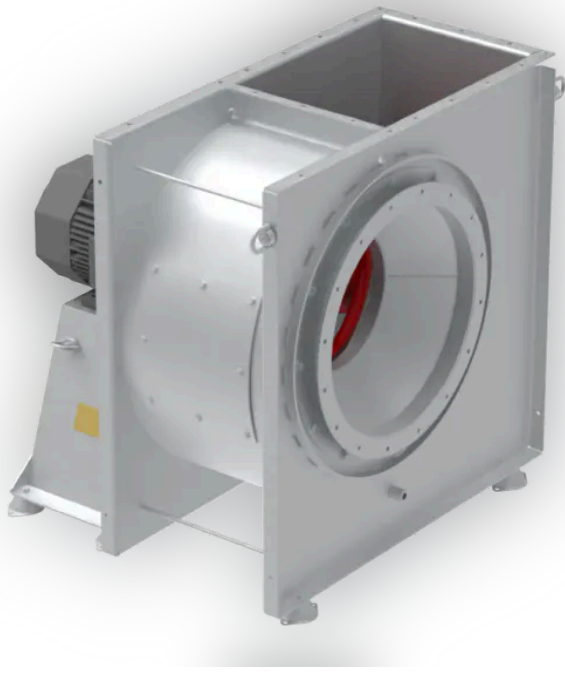




LSV


The LSV is a low-pressure centrifugal fan that can be used both as supply and exhaust fans. Originally designed for marine use but has found a variety of applications in other sectors as well. The LSV is ideal for pressures up to 4000Pa and up to 80.000 m3/h airflow.

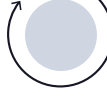
The fans can be delivered as ATEX/IECEX certified.



 Standard sizes
250 – 1200
mm

 Air flow
200 – 80000
m3/h

 Static pressure
20 – 4000 Pa

 Engine power
0 – 100kW

Summary

Design

The LSV fans are single inlet centrifugal fans with direct drive as a standard.

The fan can be mounted according to the positions given by Eurovent standard for centrifugal fans.

Often it can be used as a central with a plenum section chamber for multiple duct connections.

Execution

The LSV fan can be produced in several types of material. The standard is painted sea water resistant aluminium. This gives a corrosion resistant fan and a spark proof design.

The fan can also be delivered completely (housing/impeller) manufactured in stainless steel (AISI316L).

Steel – either galvanized or galvanized and painted execution ios delivered on request.

Impeller

The impeller is usually delivered in the same material as the fan housing where the standard is salt and ammonia resistant aluminium. The impellers are dynamically balances.

The impeller can be delivered in four different types:

- Type B:** Backward, convex curved blades. The standard impeller. Cost effective with high efficiency.
- Type F:** Forward curved blades (Scirocco impeller). For applications where high air flows are required). Only for smaller fans.
- Type Z:** Backward, concave curves blades. Self-cleaning impeller, ideal for applications where dust or material can build up on the impeller.
- Type R:** Radial blades. Heavy duty impeller for transport applications (e.g. saw dust).

Motor

The motors are as standard squirrel-cage induction motors in marine execution. Motors are IP55 and insulation class F as standard.

Motor prepared for frequency converter is available on request.

The fans can also be equipped with EX motors class Exe (increased safety), Exd or Exde (explosion-/flameproof) or EXN motor.

Customizations

- Thick casing: 6,8 or 10mm thickness
- Spark proof execution
- Shorter casing
- Special bolt division circle
- Guide vanes
- 2-speed motor
- Heating on motor

Accessories

- Vibration dampers
- Flexible connections (inlet / outlet)
- Counter flange (inlet / outlet)
- Protection grid (inlet / outlet)
- Flanged inlet
- Drain plug
- Inspection cover
- Foundation
- Motor rails (belt driven execution)

Gallery

