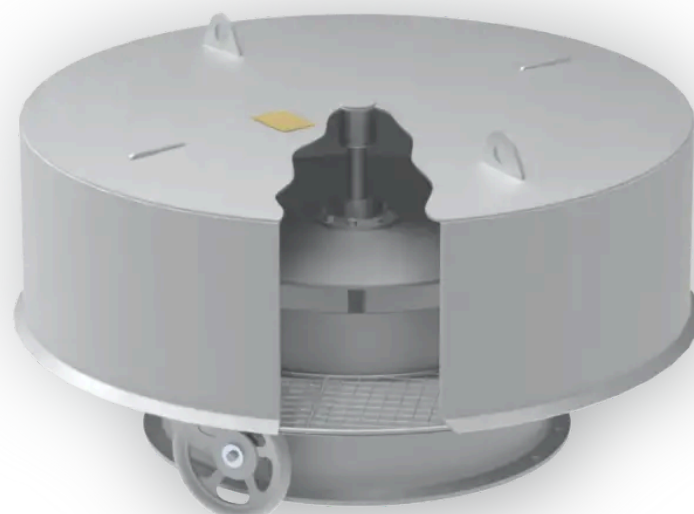


Cowls and hoods

KH – R1F

The KH-R1F is a heavy-duty ventilation cowl for marine applications. Made to be mounted on top of duct as a fixed ventilation cowl.



Standard sizes

1.000 – 1.400
mm

Summary

Design

Long experience has contributed to a simple and functional construction. The KH-R1F is a cowl for protection against seawater spray and rain, both for supply and exhaust of air.

It is available for duct sizes from $\varnothing 1000$ til $\varnothing 1400$.

Execution

Normally manufactured in Grade A ship steel, hot dip galvanizes.

Can also be produced in other materials such as sea water resistant aluminium or stainless steel (AISI 304/316)

Gallery

