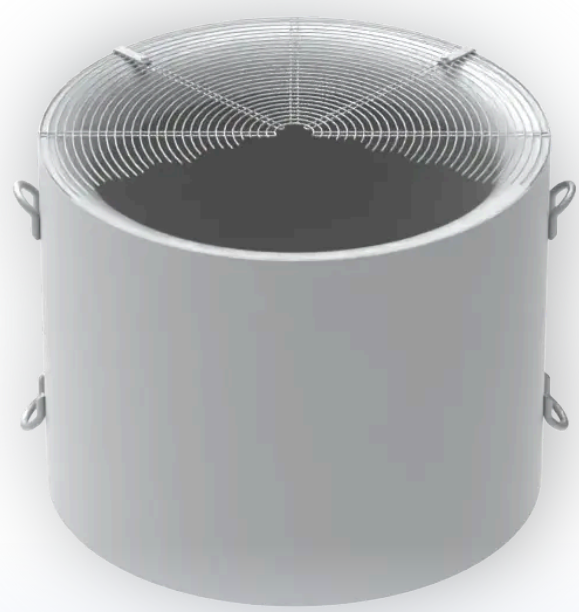


## LD

The LD is a circular silencer designed to be mounted directly in axial fans or in a duct.



Standard sizes  
200 – 1.600  
mm

## Summary

---

### Design

The silencer is a simple but effective design working as a sound attenuator. It comes in two different versions. The LD is a silencer without core and is designed for low pressure drop and high air speeds, and is most suitable for small to medium diameters.

The LD can be made in custom lengths.

### Execution

The silencer is normally manufactured in mild steel, hot dip galvanized with 100mm insulation with perforated stainless-steel plate inside.

It can also be delivered in either stainless steel (AISI316L) or aluminium (with stainless steel perforated plate inside)

### Cusomizations

- With external flanges for bolt connection
- Diffusor shape (e.g. for fan outlet)
- With integrated shut-off damper
- Thick casing (e.g. for open deck mounting)
- Additionally strengthened (for high vertical load)
- Aerodynamically shaped core for high air speeds and low pressure drops

### Accessories

- External loose inlet cone
- Wire mesh
- Counter flange

## Gallery

---

