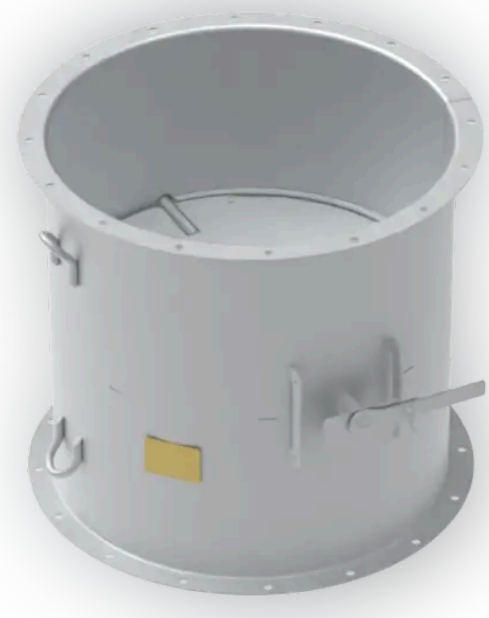


# LSS

The LSS is a circular shut-off damper often mounted directly to fans or hoods. It is designed for non-weather-thigh applications.



## Summary

---

### Design

The LSS is single blade damper which gives low pressure drop and is suitable for applications with high air speeds.

It can also be used as a regulating damper.

The LSS is typically used for small to medium sized fans.

Standard is for manual operation with lever, but can also be delivered with pneumatic or electric 24-230V actuator. Both for safe area or EX zone 1 or 2. Fail safe with limit switches.

### Execution

The LSS is normally manufactured in mild steel, hot dip galvanized. Damper blade and moving parts are made of AISI316L. The bearings are self lubricating.

The casing can also be made in AISI316L or aluminium (blade and moving parts still in AISI316L)

Blade leakage is Class A according to EN1751:1998

### Customizations

- Short casing (damper popping out of one or both sides of damper.)
- Combined damper with circular silencer
- Thick-walled casing for high vertical loads / open deck mounting

### Accessories

- External limit switches and junction box
- Optional flange standard
- Extended manual arm for remote open/close

## Gallery

---

