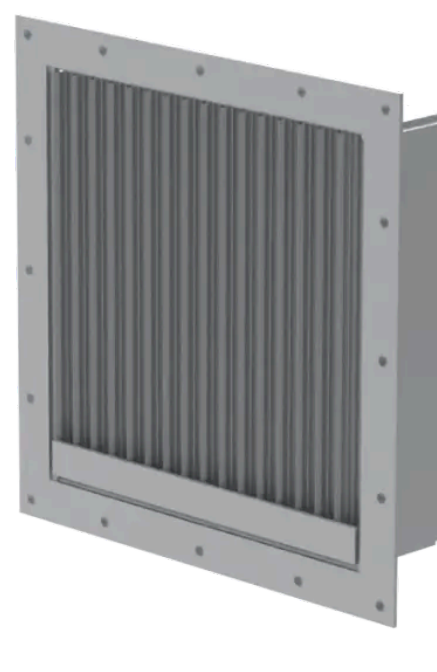


Mist eliminator

Mist eliminator louvers are used for air intakes for the separation of water droplets, moisture, and some salt spray from the air stream. This reduces corrosion, mold, and other moisture-related problems, often resulting in reduced maintenance and significant savings for the owner.



Summary

Design

- Designed for heavy-duty marine applications.
- Suitable for environments requiring efficient droplet separation.

Execution



DRS-F:

- Rectangular design, offering high efficiency droplet separation.
- Mounting on bulkhead.
- Profiles constructed from high tensile aluminum alloy, resistant to salt.
- Available in various sizes.



Caption: DRSL-F

DRSL-F:

- Rectangular design, featuring high efficiency droplet separation.
- Mounting on bulkhead.
- Profiles made of high tensile aluminum alloy, resistant to salt.
- Equipped with a hinged hatch with neoprene gasket and lock bolts with eye nuts.
- Can be hinged at the top, bottom, or side.
- Available in different sizes.

Customizations

Wire Mesh:

Stainless steel wire mesh available either behind or in front of the louver (12×12×1).

Sand Filter:

Front-mounted sand filter for easy removal and cleaning, available in G2 or G3 filter class.

Filter Behind Louver:

Incorporates a filter behind the louver to capture dust or soot, available in G3 or G4 filter class.

Drain Pipe Options:

Drain pipe configuration with the option for drainage to the front or inside.

Painted Finish:

Available with a painted finish for aesthetic and

Wire Mesh:

Stainless steel wire mesh available either behind or in front of the louver (12×12×1).

Sand Filter:

Front-mounted sand filter for easy removal and cleaning, available in G2 or G3 filter class.

Filter Behind Louver:

Incorporates a filter behind the louver to capture dust or soot, available in G3 or G4 filter class.

Drain Pipe Options:

Drain pipe configuration with the option for drainage to the front or inside.

Painted Finish:

Available with a painted finish for aesthetic and protective purposes.

Access Door:

Equipped with an access door (e.g., 800×800mm) for easy maintenance and inspection.

Hinged Execution:

Entire louver designed with a hinged mechanism for convenient access.

External Mounting:

Designed for mounting entirely on the outside of a bulkhead.

Inclined Sides:

Option for one or more sides of the louver to be inclined, such as a triangular shape.

Optional Material Execution:

Entire louver constructed in stainless steel, available in AISI 304 or AISI 316L for enhanced durability and corrosion resistance protective purposes.

Access Door:

Equipped with an access door (e.g., 800×800mm) for easy maintenance and inspection.

Hinged Execution:

Entire louver designed with a hinged mechanism for convenient access.

External Mounting:

Designed for mounting entirely on the outside of a bulkhead.

Inclined Sides:

Option for one or more sides of the louver to be inclined, such as a triangular shape

Gallery

