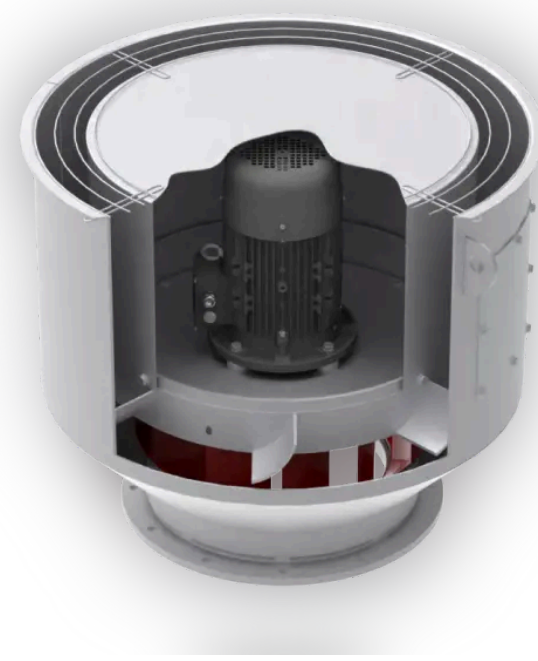
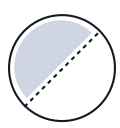


# SKV

The SKV fan is a centrifugal fan designed primarily for use onboard ships for duct-top mounting. It is available in eight different sizes. The fan has a wide area of application such as extraction fan from galleys, mess rooms, cabins, lavatories, crab- and prawn boilers.



 Standard sizes  
125 – 450 mm

 Air flow  
200 – 12.000  
m<sup>3</sup>/h

 Static pressure  
20 – 1.400 Pa

 Engine power  
0 – 5kW

## Summary

---

### Design

The fan is designed to straighten the air stream upwards and if any overflow of water occur the fan is supplied with drain gap.

The motor is completely shielded from the air flow with the help of a special motor cowl, this is important if the air stream contain corrosive fumes or water stream.

As standard the fan is delivered with a top-mounted wire mesh guard in AISI316.

### Execution

Standard is painted sea water resistant aluminium. This gives a corrosion resistant fan and a spark proof design.

All bolts and nuts in the construction is non-corrosive steel.

### Impeller

The impeller is made of salt- and ammonia resistive aluminium alloy.

### Motor

The motors are as standard squirrel-cage induction motors in marine execution. Motors are IP55 and insulation class F as standard.

Motor prepared for frequency converter is available on request.

The fans can also be equipped with EX motors class Exe (increased safety), Exd or Exde (explosion-/flameproof) or EXN motor.

### Customizations

As with all Nyborg products the SKV can be customized to your needs.

### Accessories

- Counter flange
- Protection grid

## Gallery

---

